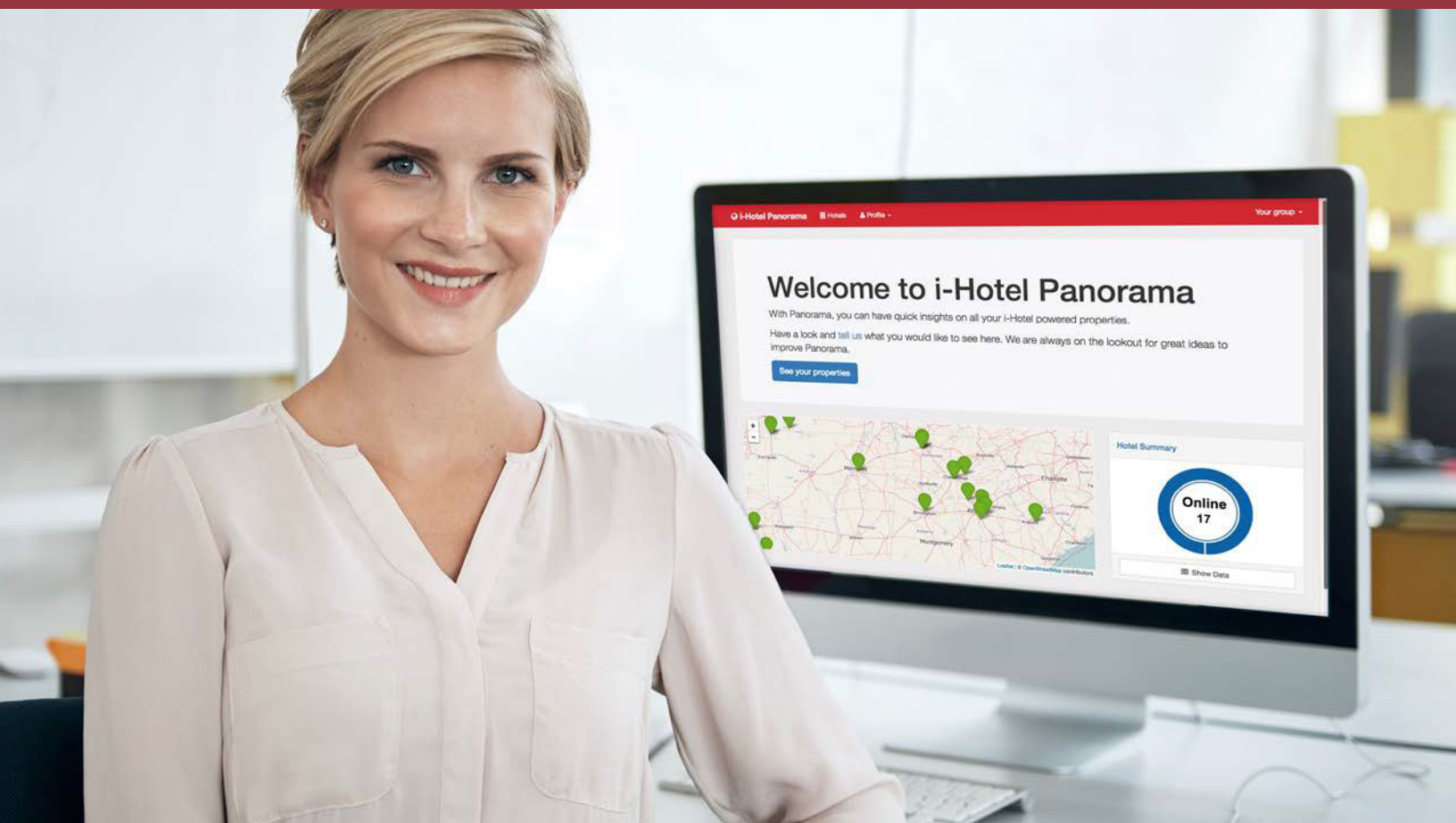


Panorama: Cloud-based Dashboard for i-Hotel Gateways



Easy to understand information
for the non-IT professional

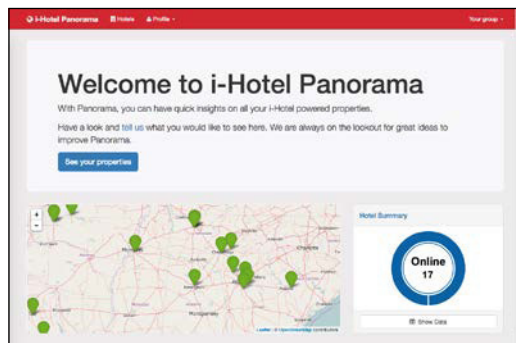
Panorama is our cloud-based dashboard: it monitors all of your i-Hotel gateway installations and provides easy to understand information for the non-IT professional, and even some technical details for the more advanced users. Use Panorama to quickly identify any ongoing issues with your guest HSIA network for your properties. And best of all... it's free as long as you are an active Intello customer.

intello
TECHNOLOGIES

intello.com

Panorama: Cloud-based Dashboard for i-Hotel Gateways

TECHNICAL SPECIFICATIONS



i-Hotel Gateway Information

- Map view with listing of all your i-Hotel gateways
- Gateway status (online/offline)
- Gateway uptime
- Gateway model
- Gateway serial number
- i-Hotel software version
- Link to secured i-Hotel administration interface

Property Information

- Name of property
- Map of property location
- Number of rooms

ISP Connection (WAN) Information

- Peak Throughput download and upload graphs (hourly, daily, monthly, yearly)
- ISP provider
- Public IP address
- Status
- Results from nightly ISP speed tests
- Quickly see if your ISP connection is consistently delivering the speeds you're paying for

Access Point Information

- Number of APs & model
- Number of APs that are up vs. down

Intello Call Center Statistics

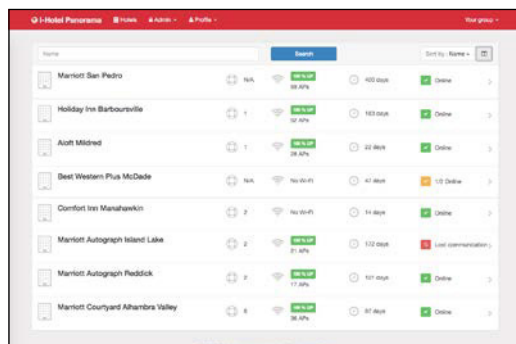
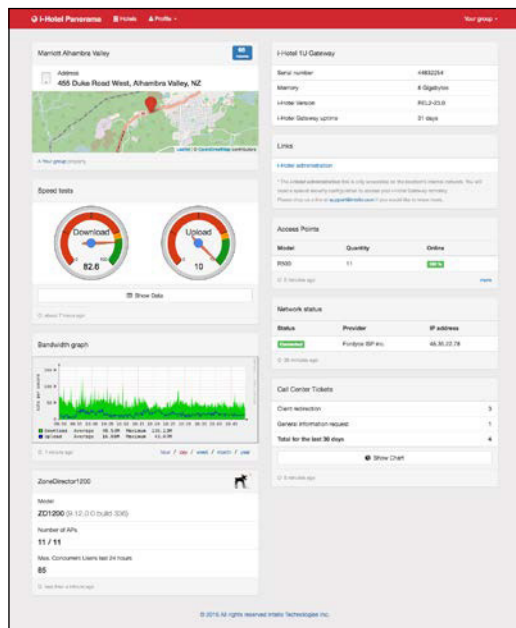
- Total number of calls in the last 30 days
- Number of calls per category

Multi Site: monitor all of your sites from a single dashboard

Multi User: supports multiple users within your organization

Multi Device: compatible with desktop, tablet and mobile devices

Multilingual: available in English and French



USA : 1-888-404-6268

sales@intello.com

CANADA : 1-888-404-6261